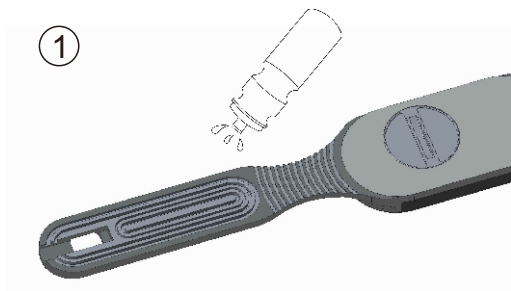


1. Heart Rate Monitor Sensor
2. Battery Cover
3. Electrode areas
4. Chest Strap

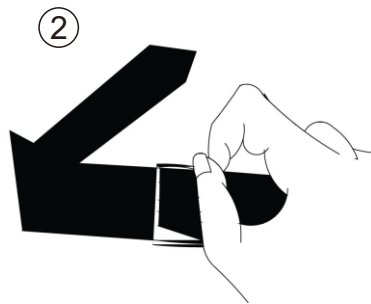
SPECIFICATION

Tech: BLE 4.0 2.4GHz Wireless
 FitChest: 70-120cm/27.5"-47.2"
 100-150cm/39.4"-59.0" (with optional chest strap extension)
 Battery Lifetime (approx): 700 hours
 Battery: CR2032*1pc (included)
 Compatible Device: iPhone4S, iPhone5, iPod5, iPod3 and iPod4, iPhone6, Android.
 Transmission Range: <30 meter (99ft)
 Waterproof: 10 meter (33 ft)
 Operating temperature: -10°C ~ 50°C (14°F ~ 122°F)
 Weight: 60g/2.11 oz (strap+monitor)

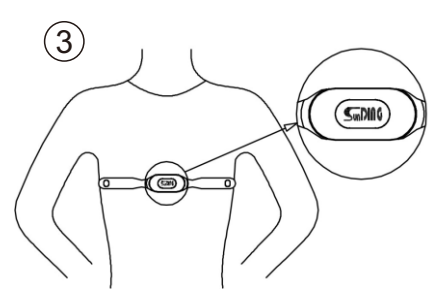
HOW TO WEAR HEART RATE MONITOR



Slightly moisten electrode areas on the chest strap. (If necessary)



Adjust strap length and wrap around chest, insert clasp to strap end. Make sure chest strap is fastened on your body properly.



Insure the electrodes are pressed firmly against your skin. The sensor should be centered on your chest with the logo in the upright position.

MAINTENANCE OF CHEST STRAP

1. Detach the Heart Rate Monitor and rinse the chest strap under running water after each use and dry it with a soft towel. Never use alcohol or any abrasive material. Clean the chest strap with mild soap and water solution when needed.
2. Do not stretch the chest strap or bend the electrode areas sharply.

WARNING

1. Do not store Heart Rate Monitor in damp environment or non-breathable material (such as sports bag), nor with conductive material (a wet towel).
2. Do not expose the Heart Rate Monitor to direct sunlight for extended periods.
3. Pacemaker users should never use this device.

APPS IN APP STORE



JoycuneLite



Runtastic



60beat



Wahoo Fitness



Wahoo Utility

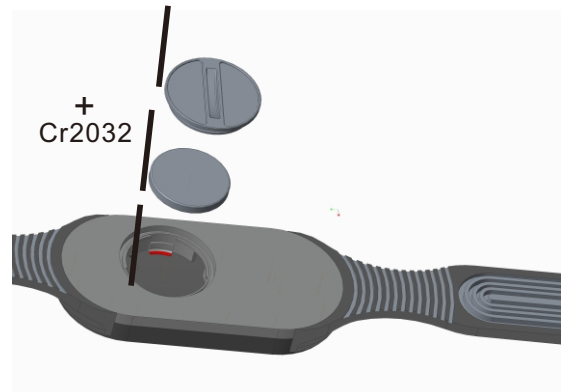


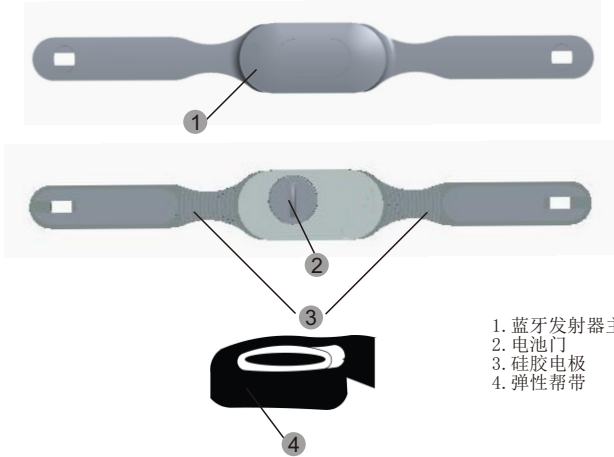
Endomondo



miCoach

CHANGING BATTERY



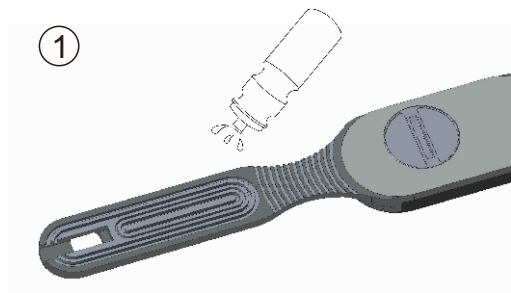


1. 蓝牙发射器主体
2. 电池门
3. 硅胶电极
4. 弹性帮带

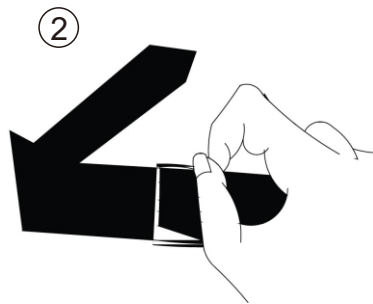
规格

技术: 蓝牙低功耗BLE 4.0 无线频率 2.4G赫兹
 适用胸围: 70-120厘米/27.5-47.2英寸
 100-150厘米/39.4-59.0英寸(穿戴扩展胸带)
 电池使用时长(约): 700 小时
 电池: CR2032*1个(包含)
 兼容设备: iPhone4S, iPhone5, iPod5, iPod3 and iPod4, iPhone6, Android.
 传输范围: <30 米(99英尺)
 防水: 10 米(33 英尺)
 运行温度: -10°C ~ 50°C(14°F ~ 122°F)
 重量: 60克/2.11 盎司(心率带+主体)

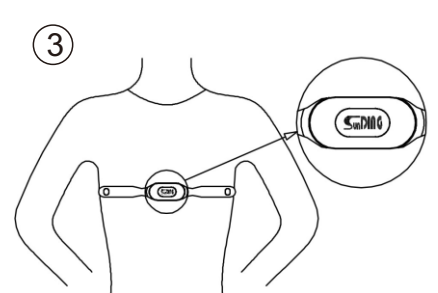
心率带穿戴



① 如干燥的天气使用时, 轻微用水沾湿心率带的电极区域。(必要时)



② 心率带环绕胸部, 并在尾端系好暗扣。调节长度, 确保心率带正确安装在身上。



③ 从正面直视心率带, 心率带的LOGO为正确方向(如图), 确保电极区域紧贴皮肤。

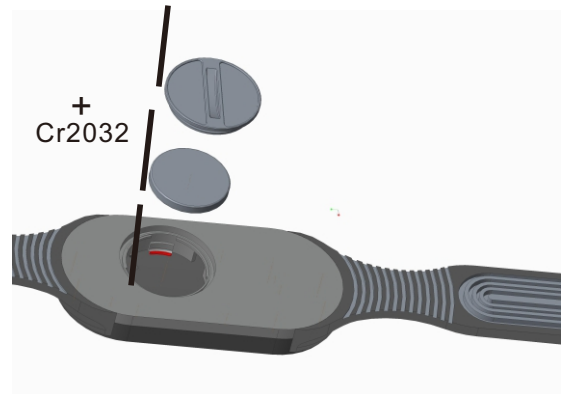
心率带保养

1. 每次使用后, 取下心率带用清水清洗, 并用柔软的毛巾擦拭。不要使用酒精或粗糙材料。必要时用肥皂清洗心率带。
2. 不要拉伸心率带或大幅度的弯曲电极区域。

警示

1. 请勿将心率检测仪储存在潮湿环境或非透气性材料中(如运动包), 或与导电材料一起(如湿毛巾)。
2. 请勿将心率检测仪暴露在阳光直射中过长。
3. 心脏起搏器使用者请勿使用该设备。

更换电池



应用软件在应用商店



JoycuneLite



Runtastic



60beat



Wahoo Fitness



Wahoo Utility



Endomondo



miCoach