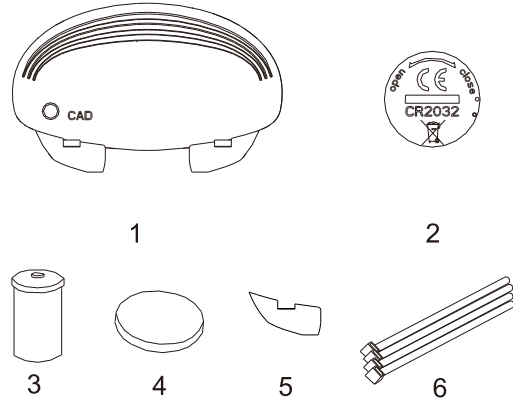


Bike combo sensor (includes the cadence sensor and a speed sensor) attaches to the chain stay of your bike to help you track your speed and cadence accurately

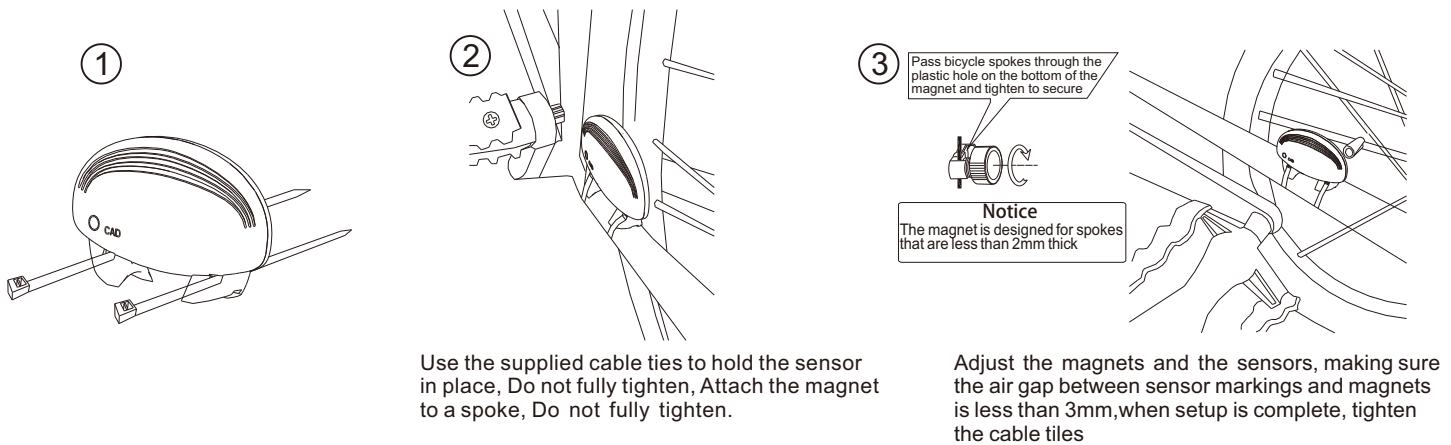
SPECIFICATION

Tech: BLE 2.4GHz Wireless
 Battery Lifetime (approx): 500 hours
 Battery: CR2032 × 1 pc (included)
 Transmission range: < 3 meter (9.9ft)
 Waterproof: Splash proof
 Operating temperature: -10°C ~ 50°C (14°F ~ 122°F)
 Weight: 40g / 1.41oz (Bike combo sensor)



1. Combo sensor
2. Battery Cover
3. Wheel Magnet
4. Crank Magnet
5. Sponge
6. Nylon Ties

BIKE COMBO SENSOR INSTALLATION PROCEDURE



PAIRING WITH BIKE COMPUTER

Swipe the wheel magnet crank magnet about 1mm~3mm from the speed sensor in order to wake up the combo sensor.

Combo sensor will transmit a pairing bit when it triggers by wheel magnet or crank magnet. The pairing bit will present after a battery installation and it will last for 1 minute. Combo sensor will stop transmitting RF signal and go back to sleep mode when there is no trigger in 2 minutes.

WARNING

Do not drop a bike sensor or subject it to severe shock.

Do not expose a bike Combo Sensor to extreme temperatures and excessive moisture. Use diluted neutral on a soft cloth to clean a bike combo sensor.

Do not attempt to disassemble, repair, or make any modifications to a Bike Combo Sensor. Any attempt to do so will make the warranty invalid.

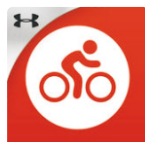
APPS IN APP STORE



JoycuneLite



MapMyRIDE



MapMyFitness



Wahoo Fitness



Endomondo



Runtastic Road bike

CHANGING BATTERY

