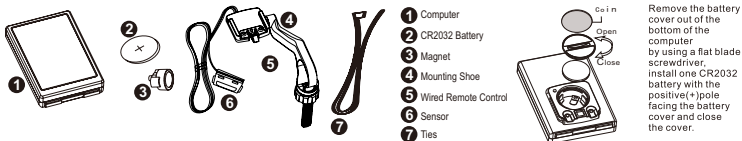


FUNCTIONS ILLUSTRATIONS

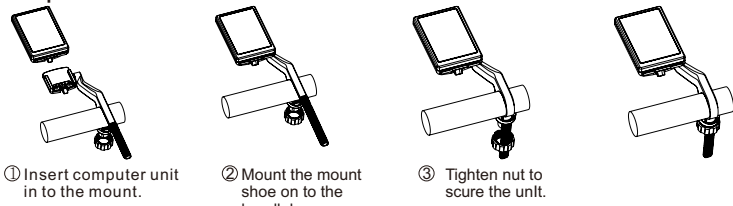
- SPD CURRENT SPEED
- ODO ODOMETER
- DST TRIP DISTANCE
- MXS MAXIMUM SPEED
- AVS AVERAGE SPEED
- TTM TOTAL TRIP TIME
- TM TRIP TIME
- RAT RIDING ALL TIME (SINGLE TRIP TIME)
- CLK CLOCK 12H/24H
- SW STOPWATCH
- Th TEMPERATURE
- MAX Th MAXIMUM TEMPERATURE
- MIN Th MINIMUM TEMPERATURE
- TM UP TRIP TIME COUNT UP
- TM DN TRIP TIME COUNT DOWN
- TRIP UP TRIP DISTANCE COUNT UP
- TRIP DN TRIP DISTANCE COUNT DOWN
- CAL CALORIE
- FAT FATBURN
- COMPARATOR
- Km/Mile SELECTION
- SLEEP MODE
- MAINTENANCE ALERT
- SETTING TYRE CIRCUMFERENCE
- SETTING LAST VALUE OF ODOMETER/ODO
- SETTING TTM
- COMPUTER LOW BATTERY INDICATOR
- SENSOR LOW BATTERY INDICATOR
- AUTO BACK LIGHT
- AUTO WAKE UP
- AUTO ON/OFF

HEAD UNIT ILLUSTRATION

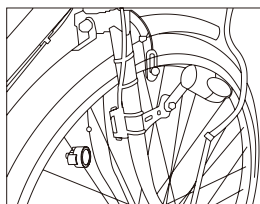


COMPONENT ILLUSTRATIONS

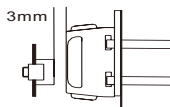
Computer unit and mount installation



Installation diagram of magnet and Sensor



Fix the wire: Place the wire like image shows, avoid binding the wire on the controller, or probably affect your control on riding. Attach the sensor to the front fork by the ties, the computer and the sensor should be installed on the same side of the fork. The arrow sign on the sensor should point to the magnet. Install the magnet as shown in the figure. Adjust the sensor and magnet to make sure the distance between them is 3 mm.



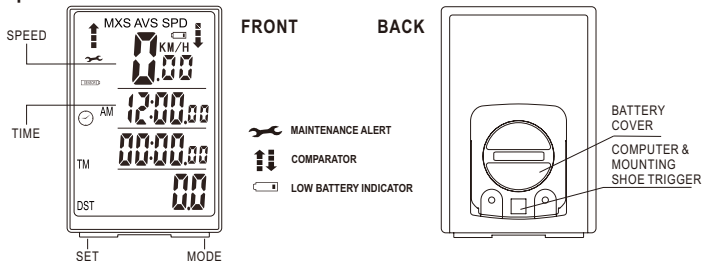
Notice
The magnet is designed for spokes that are less than 2mm thick

Pass bicycle spokes through the plastic hole on the bottom of the magnet and tighten to secure



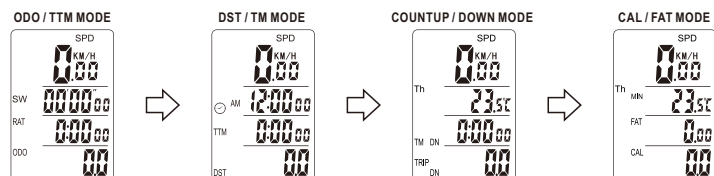
INSTRUCTION

Computer unit interface



MODE INSTRUCTION

After inserting the battery, the screen enters the total distance/time mode. Press the MODE button to cycle through single distance/time mode, count up/down mode and fat/calorie mode in turn. In the total distance/time mode, count up/down mode and fat/calorie mode, it will automatically return to the single distance/time mode after 8 seconds of no operation.



MALFUNCTIONS AND REASONS

1. The speedometer shows 0 km/h while riding.

Improper magnet/sensor alignment, or the distance between the computer and the sensor is more than 80cm.

2. The speedometer shows wrong values.

Take out the battery and reset it after 10 seconds.

3. Black display

Avoid exposing the device to direct sunlight or high temperature for too long. Let it cool down in the shade for a while.

4. Display shows incomplete figures.

Poor battery contact or dead battery. Check the installation of the battery or change a new battery.

5. Display readout fades out

The battery voltage is low, change a new battery.

Computer Unit Setting

Enter Setting Mode

In any mode , Long press SET+MODE button for 3 seconds to enter setting mode.

TEMPERATURE UNIT (C/F°) SETTING

After enters setting mode, press the MODE button to select between Celsius or Fahrenheit . Then press the SET button to go to the clock setting mode.



Time Format (12H/24H) SETTING

In Clock setting, press the MODE button to choose between 12H or 24H format, then press the SET button to go to the hour setting mode and change the hour value with the MODE button. Repeat the same steps for the minute setting, then press the SET button to go to the tire circumference setting mode.



TIRE CIRCUMRENCENCE SETTING

To set the tire circumference, use the chart to the right to find the data for your tire size. The default value is 2080 mm. Press MODE button to cycle through the flashing digit and Press SET button to confirm and move to next digit. The value can range from 0 to 9999 mm. After finishing circumference setting, press SET button to go to the speed unit setting.



SPEED UNIT SETTING (KM/H)/(MILE/H)

To choose between kilometers per hour (km/h) or miles per hour (m/h) for the speed unit, press the MODE button in the speed unit setting mode. Then press the SET button to go to the odometer setting mode.



ODOMETER SETTING

To set the odometer, press the MODE button to cycle through the flashing digits and press the SET button to move to the next digit. The default value is 0000 and it can range from 0 to 99999 km or miles. After setting the odometer, press the SET button to go to the total riding time setting mode.



TTM (SINGLE TRIP TIME) SETTING

To set the total riding time, press the MODE button to cycle through the flashing digits and press the SET button to move to the next digit. The default value is 00:00:00 and it can range from 0 to 9999 hours. After setting the total riding time, press the SET button to go to the maintenance alert setting mode.



MAINTENANCE ALERT SETTING

To set maintenance alert, press the MODE button to adjust the flashing value. The adjustment values are: 200, 400, 600, 800. After setting the alert, press the SET button to enter the display mode.



TM DN AND TRIP DN SETTING

To set the trip time/trip distance count down, press the SET button for 3 seconds in the trip time/trip distance count down mode to enter setting mode, then press the MODE button to change the flashing digits and press the SET button to move to the next digit. The default values are 000.0 for trip distance count down (0 to 999.9 km or mile) and 00:00:00 for trip time count down (0 to 99:59:59 hours). Press the SET button to go back to the trip time down and trip distance down mode once finish setting.



TM UP AND TRIP UP RESET

In the distance/time countdown (TM/TRIP DN) mode, press SET button to enter the distance/time count up (TM/TRIP UP) mode. In the distance/time count up mode, press and hold MODE button for 3 seconds to clear the distance/time count up data.

CALORIE / FAT RESET

In the fat/calorie mode, press and hold the SET button for 3 seconds: fat and calorie data are cleared, other data are retained.

CLEAR ALL DATA

In DISPLAY mode , press the SET button for 3 seconds to clear all the data including that for DST/ MAX/ AVS/ TM/ RAT/ MAX TH/ MIN TH. (except that for CLK\ ODO\ RAT\ TRIP UP\ TRIP DN\ TM UP\ TRIP DN)

FUNCTIONS

SPD

The screen always shows the speed, which can go up to 99.9 km/h (m/h) with an accuracy of +/- 0.1 km/h (m/h).

SPD COMPARATOR

During riding, "H" and "L" on screen indicates the current speed is higher or lower than average speed(AVS)

ODO

The screen shows the total distance in ODO mode, which can be 0 to 99999 km (mile). The value resets to 0 after reaching the maximum limit.

DST

The bottom line shows the single trip distance in DST mode, which can be 0 to 9999 km (m). The value resets to 0 after reaching the maximum limit.

MAX SPD

After resetting the data, the highest speed during the trip is shown. Press SET in the DST/TM mode to see the highest speed on the first line. Goes back to current speed after 8 seconds.

AVS SPD

After resetting the data, the average speed during the trip is shown. Press SET in the DST/TM mode to see the average speed on the first line. Goes back to current speed after 8 seconds.

TM

After resetting the data, the trip time starts from zero and counts up to 999 hours. After that, it resets to zero and counts again.

TTM

Total riding time for one trip .TTM ranges 0~9999hr.

RAT

Travel time .RAT ranges 0~9999hours.

STOPWATCH

In ODO or TTM mode, press SET to start stopwatch, press SET again to stop stopwatch. Long press SET for 3 seconds to clear the stopwatch data.

TRIP TIME UP / TRIP DISTANCE UP

The distance counts up from zero when riding, and the maximum value is 9999.9. After that, it resets to zero and counts again. The time counts up from zero when riding, and the maximum value is 99:59:59. After that, it resets to zero and counts again

TRIP TIME DOWN / TRIP DISTANCE DOWN

The distance counts down from the set value, and it becomes negative when it reaches zero. It stops counting when it gets to -999.9.

TEMPERATURE

Shows the ambient temperature in Celsius or Fahrenheit. The Celsius range is -20 to 70 degrees. The Fahrenheit range is -4 to 158 degrees.

MAXIMUM TEMPERATURE

Maximum ambient temperature in a single trip.

MINIMUM TEMPERATURE

Minimum ambient temperature in a single trip.

FATBURN FAT

Shows fat burned after last data reset.

CALORIE CAL

Shows calories burned after last data reset.

SLEEP MODE

The screen turns off after 300 seconds of no movement, but the clock remains on display. You can turn on the screen by shaking the bike or pressing any key, the computer unit will return to the last used mode and preserve all the data collected.

CARE REMINDER

When the riding distance is greater, than the set maintenance distance, the icon will appear, press both the SET and MODE button at the same time to clear it.

AUTO BACKLIGHT

The device automatically senses the brightness of the environment. When ambient light is insufficient, you can press any key to light up the screen for 5 seconds. When there is enough ambient light, the screen will not light up when you press any key. You can press and hold MODE key for 3 seconds to keep the screen on or off.

COMPUTER LOW BATTERY INDICATOR

When the computer battery voltage is low, computer low voltage symbol appears on the screen. The symbol disappears when you change the battery.

SENSOR LOW BATTERY INDICATOR

When the Sensor battery voltage is low, sensor low voltage symbol appears on the screen. The symbol disappears when you change the battery.

TIRE SIZE	CIRC
12x1.95	940
14x1.75	1055
16x1.50	1185
16x2.00	1245
17x1-1/4	1340
18x1.50	1340
18x1.75	1350
20x1.25	1450
20x1.35	1460
20x1.50	1490
20x1.75	1515
20x1.95	1565
22x1-3/8	1770
22x1-1/2	1785
24x1.75	1890
24x2.00	1925
24x2.125	1965
24x1-1/8	1795
24x1-1/4	1905
26x1.25	1950
26x1.40	2005
26x1.50	2010
26x1.75	2023
26x1.95	2050
26x2.10	2068
26x2.25	2070
26x2.35	2083
26x3.00	2170
26x1-1/8	1970
26x1-3/8	2068
26x1-1/2	2100
650x20C	1938
650x23C	1944
650x25C	1952
650x38A	2125
650x38B	2105
27x1-1/8	2155
27x1-1/4	2161
27x1-3/8	2169
27.5x1.50	2079
27.5x1.95	2090
27.5x2.1	2148
27.5x2.25	2182
700x18C	2070
700x19C	2080
700x20C	2086
700x23C	2096
700x25C	2105
700x28C	2136
700x30C	2146
700x32C	2155
700x35C	2168
700x38C	2180
700x40C	2200
700x42C	2224
700x44C	2235
700x45C	2242
700x47C	2268
29x2.1	2288
29x2.2	2298
29x2.3	2326