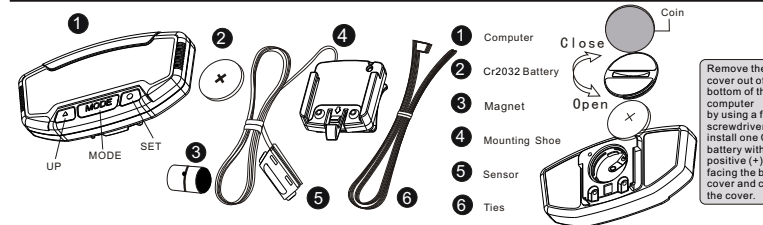
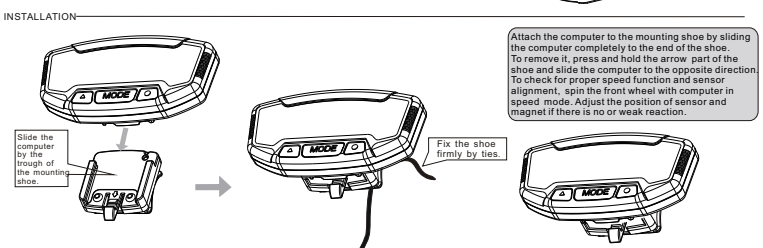


COMPUTER & PARTS

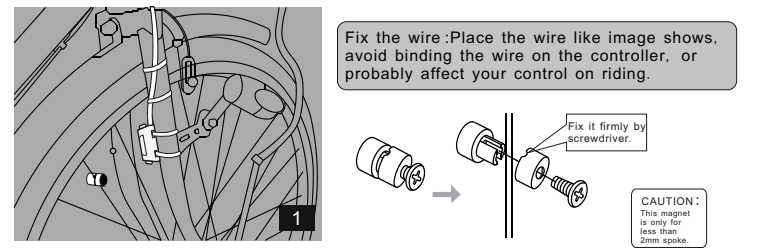


Remove the battery cover out of the bottom of the computer by using a flat blade screwdriver, install one CR2032 battery with the positive (+) pole facing the battery cover and close the cover.

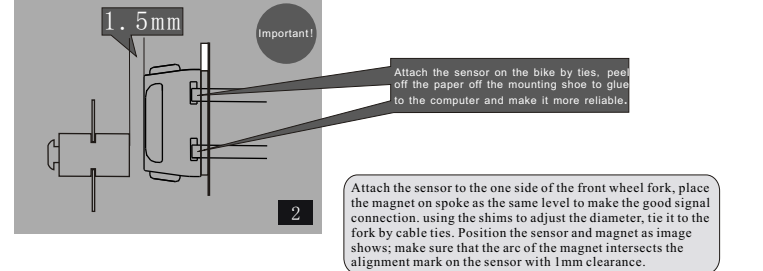


Attach the computer to the mounting shoe by sliding the computer completely to the end of the shoe. To remove it, press and hold the arrow part of the shoe and slide the computer to the opposite direction. To check for proper speed function and sensor alignment, spin the front wheel with computer in speed mode. Adjust the position of sensor and magnet if there is no or weak reaction.

COMPONENT ILLUSTRATIONS



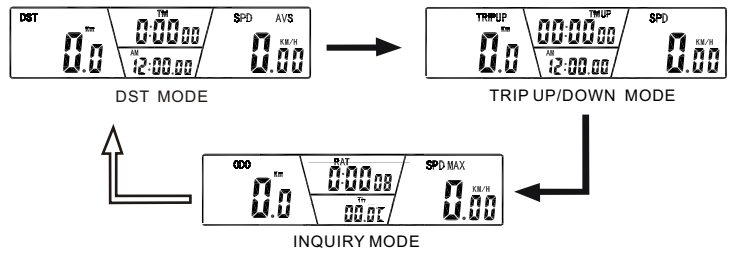
CAUTION: This magnet is only for less than 2mm spoke.



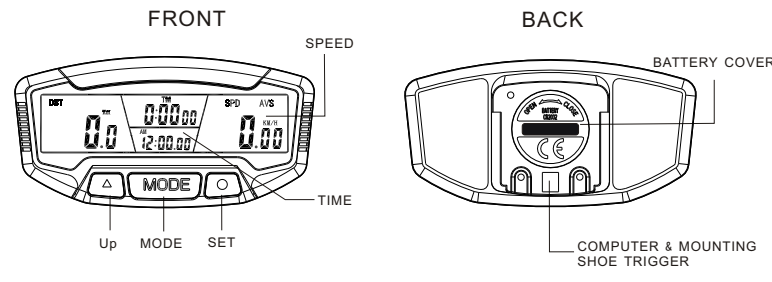
INSTRUCTION

MODE INSTRUCTION

When battery is put in the computer, the display is in DST mode. It has three modes of this computer, DST, TRIP UP/DOWN and INQUIRY MODE. Each press of the MODE button switches into one of three MODES. The DST MODE is the default one.



MAIN UNIT



COMPUTER SETTINGS

WHEEL SIZE SETTING & CHART		TIRE SIZE	CIRC	TIRE SIZE	CIRC	TIRE SIZE	CIRC
700CX38mm	2180	650CX23mm	1990	26" x 1. 75"	2035		
700CX35mm	2168	650CX20mm	1945	26" X1. 5"	1985		
700CX32mm	2155	27" x1-1/4"	2161	26" X1. 25"	1953		
700CX30mm	2145	27" x1-1/8"	2155	26" X1. 0"	1913		
700CX28mm	2136	26" x2. 3"	2135	24" X1. 9"	1916		
700CX25mm	2124	26" x2. 25"	2115	20" X1-1/4"	1618		
700CX23mm	2105	26" x2. 1"	2095	1. 6" X2. 0"	1253		
700CX20mm	2074	26" x2. 0"	2074	1. 6" X1. 95"	1257		
700CX Tubular	2130	26" X1. 9"	2055	1. 6" X1. 5"	1206		

TEMPERATURE SETTING (° C/° F)

When in DATA SETTING MODE, press UP button to choose C and F, press SET button to confirm and enter into the CLOCK SETTING MODE.

12/24 CLOCK SETTING

Press UP button to switch 12/24 hour mode, press the SET button to confirm and enter to HOUR setting, when figure indicates HOUR and start flashing, press the UP button to adjust the figure to the proper one, each press makes one number plus. Then press the SET button to set MINUTE, SECOND SETTING MODE and adjust them by pressing UP button as well. When this setting is over, press SET button to enter into WHEEL SIZE SETTING MODE.

(KM/H) / (M/H) SETTING

When in (KM/H)/(M/H) SETTING MODE, press the UP button to switch KM/H or M/H mode, press SET button to confirm and enter into ODOMETER SETTING MODE.

ODOMETER SETTING

When in ODOMETER SETTING MODE, Press UP button to adjust the flashing, ODO figure. Press SET button to jump to next number and set them as the same way. The default number is 0000 (range : 0-9999kms/miles). When this setting is over, press SET button to enter into RAT SETTING MODE.

RAT SETTING

When in RAT SETTING MODE, press UP button to adjust press SET button to jump to next figure. The default number is 00 : 00 : 00 (range : 0-9999Hrs). When this setting is over, press SET button to enter into DISPLAY MODE, then press MODE to enter into TM UP & TRIP UP SETTING MODE.

TM UP & TRIP UP SETTING

When in TM UP & TRIP UP SETTING MODE, press and hold SET button for three seconds to SET the figure of TM UP & TRIP UP. Press UP button to adjust, press SET to jump to next figure. The TM UP default number is 00 : 00 : 00 (range : 0-99.59.59Hrs). The TRIP UP default number is 000.0 (range : 0-999.9kms/miles). Press SET button to finish this setting and back to TM UP & TRIP UP SETTING MODE. Press SET button to enter into TM DOWN & TRIP DOWN SETTING MODE.

TM DOWN & TRIP DOWN SETTING

When in TM DOWN & TRIP DOWN SETTING MODE, press and hold SET button for three seconds to SET the figure of TM DOWN & TRIP DOWN. Press UP button to adjust, press SET to jump to next figure. The TM DOWN default number is 00 : 00 : 00 (range : 0-99.59.59Hrs). The TRIP DOWN default number is 000.0 (range : 0-999.9kms/miles). Press SET button to finish this setting and back to TM DOWN & TRIP DOWN SETTING MODE.

ONE SINGLE TRIP DATA RESET

In any mode, press and hold UP button for 3 seconds, then all the data of this single trip riding will be reset to zero except CLK ODO and RAT.

MAIN FUNCTIONS

SPD

When the wheel is circling, the current speed data is showing all the time on the screen, its ranges is : 0-99.9km/h(m/h), and it is accurate to +/- 0.1km/h (m/h).

TH

The current outdoor temperature. its ranges is : -20~70 (°C) -4F~158F.

SPD COMPARATOR

During riding, or will display on the screen, indicates the speed is higher than average speed. indicates the current speed is lower than average speed.

SLEEP MODE

If the computer is free for over 300 seconds, the computer will automatically enter into Sleep mode and hide all data but CLK. It will turn back to the previous mode with all the data when start circling or press any button.

ODO

The total distance record from the beginning zero to the current. its mileage ranges : 0.001~99999km(m). The display will automatically turn to zero if the value is out of the range.

OVER-SPEED REMINDER

When the SPD is over 20KM/H, the SPD will be flashing until the SPD is less than 20KM/H.

DST

The distance of one single trip. Its range is: 0~99999km(m). The display will automatically turn to zero if the value is out of the range.

MAINTENANCE ALERT

When the ODO is over 300KM, will be flashing, press both UP and MODE button at the same time to clear the reminder.

MAX SPD

The maximum speed of one single trip.

CARE REMINDER

When the ODO is over 300KM, the will be flashing, press both UP and MODE button at the same time to clear the reminder.

AVS

The average speed of one single trip.

FREEZE FRAME MEMORY

Press the UP button in any mode except STOPWATCH mode to enter into Freeze Frame memory mode. DST, TTM, SPD data will be freeze and the figures start flashing. Press the UP button to leave this mode.

TM

The trip time is how long one single trip riding lasts.

WIRED REMOTE CONTROL

The wired remote control button is attached the mounting shoe. it is able to replace the MODE button...

TTM

The total trip time record from the beginning zero to the current. Its range is: 0-99 : 59 : 59. The display will automatically turn to zero if the value is out of the range..

RAT

Riding time record in total from the beginning zero to the current. its range is 0-9999 Hr..

AUTO ON/OFF

The sensor in computer is able to wake up automatically the computer from sleep mode.

STOPWATCH

In DST or ODO mode, press SET button to enter into STOPWATCH MODE. Start stopwatch with UP button, press UP button again to freeze, press one more UP button to start the stopwatch again. Clean the stopwatch data by pressing SET button.

MALFUNCTIONS AND REASONS

- 1, No speedometer
 - A. Improper magnet/sensor alignment
- 2, Inaccurate value is indicated
 - A. Improper input, such as wheel circumference.
- 3, Slow display response
 - A. Temperature exceeds operating limits (0°C~55°C).
- 4, Weak display
 - A. Poor battery or dead battery.
- 5, Displays irregular figures
 - A. Take battery out and reinstall it after 10 seconds..